



**Regular Meeting of the Library Board of Trustees
Tuesday, February 15, 2022 – Zoom meeting
3:30 p.m.**

Minutes of Actions and Decisions of the Library Board of Trustees of the Bellingham Public Library as authorized by RCW 27.12.210 and SEC. 7.02 Charter of the City of Bellingham.

Board Members Present: Rick Osen, Jim McCabe, Rebecca Craven and Kristy Van Ness

Board Members Absent: Vernon (Damani) Johnson

Library Staff: Rebecca Judd, Annette Bagley, Bethany Hoglund, Jon McConnel, Jennifer Vander Ploeg, Katie Bray and Wendy Jenkins

Others Present: Kristina Michele Martens, City Council Liaison; Leigh Ann Giles and Jennie Tuckerman, Friends of BPL Co-Presidents

Call to order and introductions: Regular session was called to order at 3:30 p.m. by Chair, Rick Osen.

Approve/modify agenda: Jim McCabe moved to approve the agenda. Rebecca Craven seconded. Motion carried.

Public comment: No comments.

Consent agenda: Rebecca Craven asked why, in the year-to-date report, no budget was showing for the automated materials handler. Wendy explained that the budget for the handler is tied to a contract and purchase order. The City has a process of reaching out to departments to verify that a contract/PO needs to be reappropriated into the new budget. This process isn't complete yet. Once it is, the budget for the handler will be added.

Rebecca Judd asked the Trustees if they continued to find the 2019 column in the performance and activity measures helpful for comparison. The Trustees affirmed it is helpful.

Jim McCabe moved to approve the January 18, 2022, Regular meeting minutes and the January 2022 performance and activity measures and financial reports. Kristy Van Ness seconded. Motion carried.

Board Chair report:

- Rick reported that he and Rebecca Judd attended the Friends' January board meeting. The Friends' Annual Membership meeting will be held on Saturday, April 23, 2022, at 10:00 a.m.
- On January 26, Rick and Rebecca Judd met with Kristina Michelle for a Library orientation. He expressed appreciation for her serving as our Council liaison.
- On February 3, Rick and Rebecca Judd had their monthly meeting with the Mayor. They use this opportunity to update him on current projects – at this time it concerned the move to an all-curb side service model due to a surge in Omicron cases. Rick added that today we reopened for in-person services.

Board member reports:

- No reports.

City Council liaison report:

- No report.

Friends of BPL report:

- Leigh Ann thanked Rebecca and library staff for accepting donations during curbside service. This worked well in keeping backroom workers busy.
- As Rick mentioned earlier, the Friends' Annual Meeting will be held on Saturday, April 23, 2022. Leigh Ann announced that Rick, Rebecca, Katie Bray and Jeff Jewel, Photo Archive Research Technician for Whatcom Museum, will all be presenting at the meeting. Jeff plans to present on the history of the Library. This year marks the 70th anniversary of the Friends group and the 50th anniversary of the first big book sale. They haven't decided whether the meeting will be in-person or virtual.
- Leigh Ann, reporting from Hawaii, shared about a book mobile located outside her building. The book mobile is run by a Friends group that is not currently associated with a library. They are supporting literacy by providing free book circulation from a charming old RV.
- Jennie added that, since 1952, the Friends have raised and contributed over \$1.6 million dollars to the Bellingham Public Library!

Library Director report:

- Rebecca reported on a pending 0.7 FTE increase for the library: the position vacated by Sally's retirement (mentioned in the Director's Report) will be switched from a 0.50 FTE Collections Service position to a 1.0 FTE Librarian I position; the current 0.8 Librarian I position will be increased to a 1.0 FTE position – both increases were included for a first and second reading at City Council on February 7. Final Council approval is scheduled for February 28.
- Work on the land acknowledgement has been moving forward. Rebecca hopes to have more information to report to the board soon.
- February is Black History Month – the Library has a display and Librarian-curated reading lists available on our website to honor the month.
- Many Whatcom READS events are coming up. Full details can be found on the [Whatcom READS website](#). *An Evening with Michael Christie – In Person* is scheduled for March 4 at 7:00 p.m. at the Mount Baker Theatre. Following the event, a virtual recording will be shared via the Whatcom READS website. Free advance registration is available through the [MBT online box office](#). Seating will be spaced, in pairs, to allow

social distancing. The 2020 Whatcom READS event was the last big event before the pandemic shutdowns in March 2020.

- Ryan Dowd, who wrote *The Librarian's Guide to Homelessness*, provides training across the country. He will be offering a full day of in-person training, available to all community members, at the Mount Baker Theatre on May 20, 2022 (divided into 2 opportunities – a morning session and an afternoon session). Rebecca will provide more information when available.
- WCLS' Special Election proposition to establish the Birch Bay Library Capital Facility Area did not get the 60% approval needed for it to pass. WCLS is looking at alternative funding plans.
- In the packet are links to two articles:
 - Education Week's *Librarians Fight Back Against Efforts to Ban Books in Schools* – locally, Bellingham School District fended off a challenge, last spring, to change school policy.
 - Library Journal's *Charlotte Mecklenburg Addresses Digital Divide with 20,000 Computers and Free Neighborhood Wi-Fi* has many similarities with the small Reconnect program mentioned in the Director's Report, including the Linux operating system.

OPMA (Open Public Meetings Act) update:

- Wendy provided an overview of this law and its requirements: "The Washington Open Public Meetings Act, codified in chapter 42.30 RCW, requires that all meetings of governing bodies of public agencies, including cities, counties, and special purpose district, be open to the public."

Trustees are required to take OPMA training within three months of taking office and to take refresher training every four years. To accomplish this, Wendy emails links to video and PowerPoint training options, the Trustee views the training, signs and returns a certificate acknowledgement, and Wendy updates a tracking spreadsheet.

Pandemic response update:

- Rebecca reported our doors are back open! She thanked staff for their hard work on making this service model shift. She also thanked Jen for providing the curbside activity graphs for the Director's Report. We were able to pass out N95 masks, provided through the city, during curbside service. Rebecca expressed appreciation to the librarian group for staffing a table to answer patron questions.
- Governor Inslee has announced an upcoming press conference with a timeline for eliminating the mask mandate – more information will be provided when available.

Statistical Trends: Inputs and Outputs through 2021:

- Jon McConnel provided a reprise presentation of last February's Statistical Trends with updated 2021 data (see *Attachment #1 for Statistical Trends: Inputs and Outputs through 2021, including slides and notes. All Attachments are at the end of the minutes*).

Facilities committee update:

- Rick reported a Facilities Master Plan contract with Godfrey's Associates is in process, pending Washington State business license approval. Godfrey's is a full-time library

consulting firm (the other three firms were primarily architect consultants). The Facilities committee was able to have a first meeting with the consultants. An onsite visit is tentatively scheduled for March to see how our current facilities operate.

The Committee also met with Jon McConnel and Chris Behee, Planning Senior GIS Analyst for the city. City data will feed into the planning process.

An updated timeline for the Facilities Master Plan will be needed, given the difficulties with the business license. Even if the final report is not ready in June, it is expected that there will be enough work completed to inform the biennial budget process for 2023-2024.

Fundraising:

- Fundraising committee update: Rick reported that he and Rebecca Judd met with Senior Assistant City Attorney Sarah Chaplin and Finance Director Andy Asbjornsen to determine Trustee fundraising guidelines. Sarah is doing some research before we proceed with a planned giving process.

Library Giving Day is April 6, 2022 – Annette is working on publicity and will also be providing some language Trustees and Friends can share with personal contacts.

Rick attended a webinar this morning, *Estate Planning Basics*, presented by the Foundations of King County Library System and Seattle Public Library. They are significant Foundations with many full-time staff members. Kristy added that she has a link to previous webinars – she will forward the link to Wendy (who can be contacted if interested).

- Whatcom Community Foundation annual distribution: The library received the 2022 Annual Designated Grant Distribution, totaling \$18,296.07. Rick recalled that former Trustee Rachel Myers announced, at the March 2018 board meeting, a new (but nameless at the time) endowment established for the library. Included in this year's grant is the first distribution for this endowment – the Dorothy and Harris Gonsalves Bellingham Public Library Endowment (an obituary for Dorothy Gonsalves is included in the February board packet). Of the \$2,317.16 distribution, 80% is for the purchase of travel related books, Spanish language books, and/or to establish and maintain a reading nook; 20% to benefit the Fairhaven Branch Library.

Rick requested the board delay the decision on how to best spend the remaining \$15,978.91 annual grant distribution until after Library Giving Day.

At last month's meeting, the board voted to place the \$162,225 Bragg-Muldrow distribution into the spendable portion of the endowment to have available for future facility needs – we will use part of these funds to pay for the Facilities Master Plan consultant.

New Business:

- No new business.

Action items for next meeting:

- Facilities committee update
- Fundraising committee update – Library Giving Day, April 6, 2022

Meeting adjourned at 4:44 p.m.

Next Regular Library Board Meeting – March 15, 2022 – Zoom meeting – 3:30 p.m.

Chair, Library Board of Trustees

ATTEST

Secretary, Library Board of Trustees

Attachments:

- Attachment #1: Statistical Trends: Inputs and Outputs through 2021 (slides & notes)



Statistical Trends

Inputs and Outputs through 2021

It's a new year, we have a new City Council liaison, and we thought it would be helpful to provide an update to the run-down shared last winter of some of the statistics we report. Last year we reported through 2019; this year I'm pulling in both 2020 (reported to the State Library and subsequently published) and some data from 2021 (not yet reported to the State Library). The 2021 data comes from the Jan. 2022 Board Reports of BPL and Whatcom County Library System, and also from some reports I've run in anticipation of the State Library's annual report instructions.

RCW 27.12.260: Annual Report of Trustees

- At the close of each year the board of trustees of every library shall make a report to the legislative body of the governmental unit wherein the board serves, showing the condition of their trust during the year, the sums of money received for the library fund from taxes and other sources, the sums of money expended and the purposes of the expenditures, the number of books and periodicals on hand, the number added during the year, the number retired, the number loaned out, and such other statistics and information and such suggestions as they deem of public interest. A copy of this report shall be filed with the state librarian.
- [[1935 c 119 § 12](#); RRS § 8226-12. Prior: [1909 c 116 § 8](#); [1901 c 166 § 8](#).]

Libraries in Washington State are required to submit metrics to their sponsoring jurisdictions, and to the State Librarian. Nowadays there's an online tool to submit stats. Used to be a paper form....

Washington Public Library Statistics

sos.wa.gov/library/libraries/libdev/publications.aspx

COB.ORG Staff Central Library Staff Home... Imported Thycotic Secret Ser... Outlook Online Secret Server Web... OverDrive APIs Stat... Dashboard - OCLC... IT Service Desk

SAS ABOUT THE LIBRARY RESEARCH & COLLECTIONS SERVICES FOR LIBRARIES MY ACCOUNT FIND A LIBRARY ASK A LIBRARIAN DONATE

Washington Public Library Statistics

Public library statistics including budget, collections, and usage data, are collected and compiled on an annual basis by Library Development staff. More statistics are available from the [Institute of Museum and Library Services](#).

[Washington 2020 Map of Public Library Service](#)

[2019 CSV file of Library Administrative Data and 2019 CSV file of Branch Library Data](#)

Note: the two csv (comma separated values) files contain the same data as presented in the Excel Spreadsheet below, but in a more open, non-proprietary format.

[2019 Excel Spreadsheet](#) - Note: there are multiple tabs

[2019 Full Report \(1.5 MB\)](#)

[2019 Report Categories](#)

Top Ten Lists	Library Programs
Summary of Service	Annual Library Service Measures
Revenue and Expenditures Summary	Computers
Total Revenue Sources	Automated Systems, E-Rate and Filters
Operating Revenue Sources	Electronic Service Measures
Local, Federal and Capital Revenue Detail	Internet Presence
Local, State and Federal Revenue Per Capita Detail	Branch Data
Total Expenditures	Salaries
Total Operating Expenditures Detail	Benefits
Personnel, Collection, Other & Capital Expenditures	Public Library Service by County
Outlets, Registered Users and Staff	Glossary
Collection/Holdings	Notes
Circulation and Collection Use	Credits
Resource Sharing: ILL and Cooperatives	Table of Contents

[Previous Statistics \(1999 - 2018\)](#)

The Washington State Library collects the submitted data, cleans it up, does some analysis, and publishes each year's data online. They also pass the data along to the federal Institute for Museum and Library Services for their Public Libraries Survey.

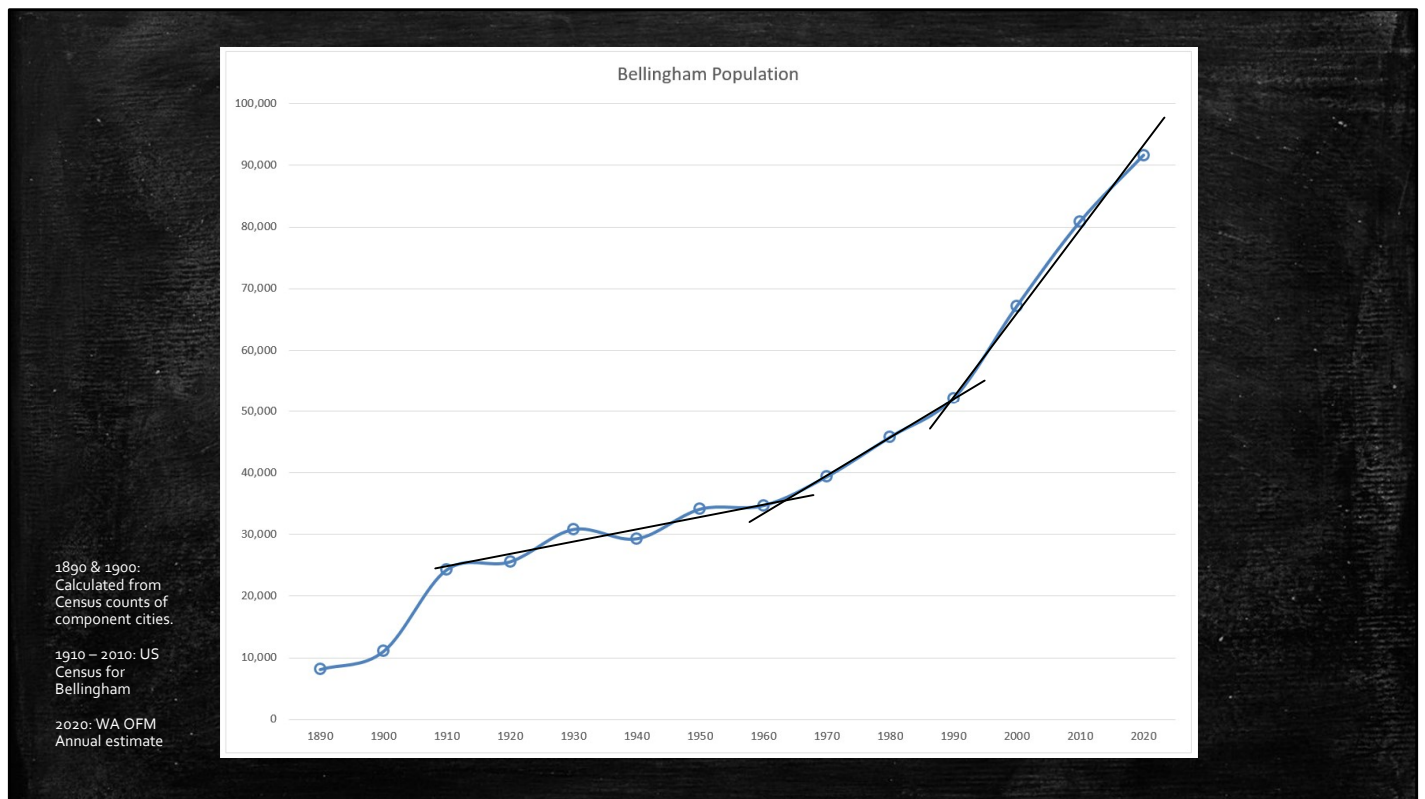
[illegible][illegible]

In 2013 the Board of the Whatcom County Library System asked for a report on 10-year data trends in comparison to other comparable libraries. I pulled together 10 years of the Washington data and prepared a tool that would allow for comparisons, as well as making it fairly easy to change which libraries are being compared. I've been adding new data ever since. You can download the Excel file from the BPL website.

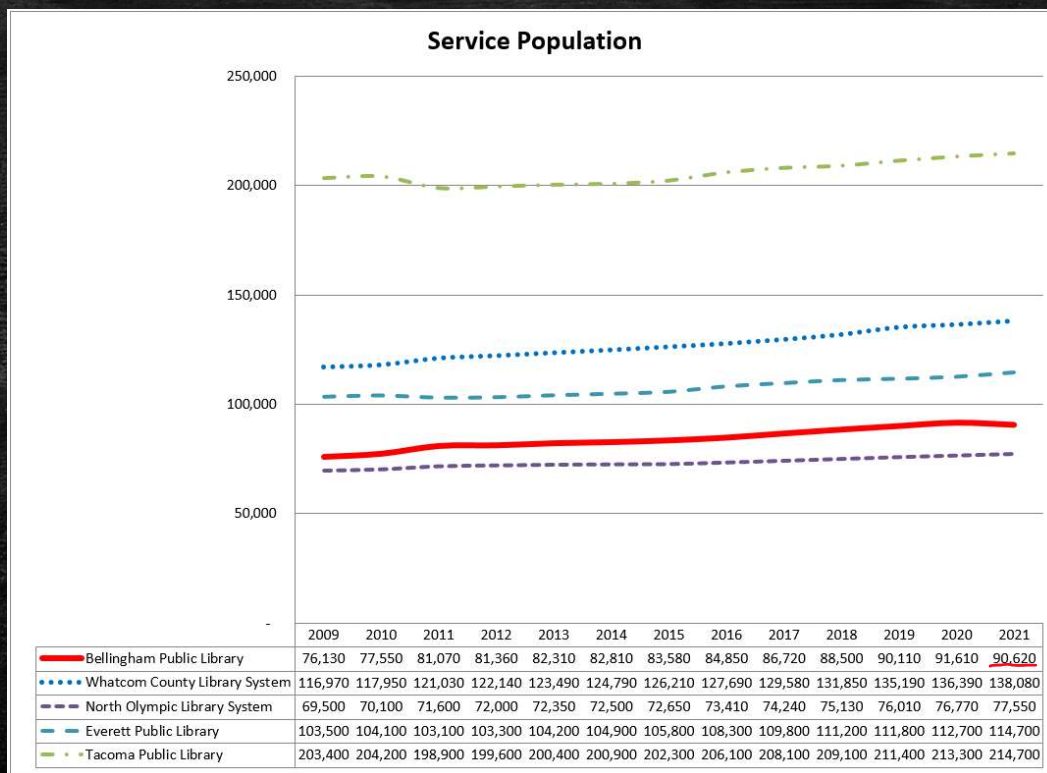
Definitions

- LSA: Legal Service Area
 - The geographic area a public library serves.
- Service Population
 - Residents of the LSA
- SARS CoV-2 and COVID 19
 - What we've been dealing with since March 2020
 - SARS CoV-2 is the virus
 - COVID 19 is the disease

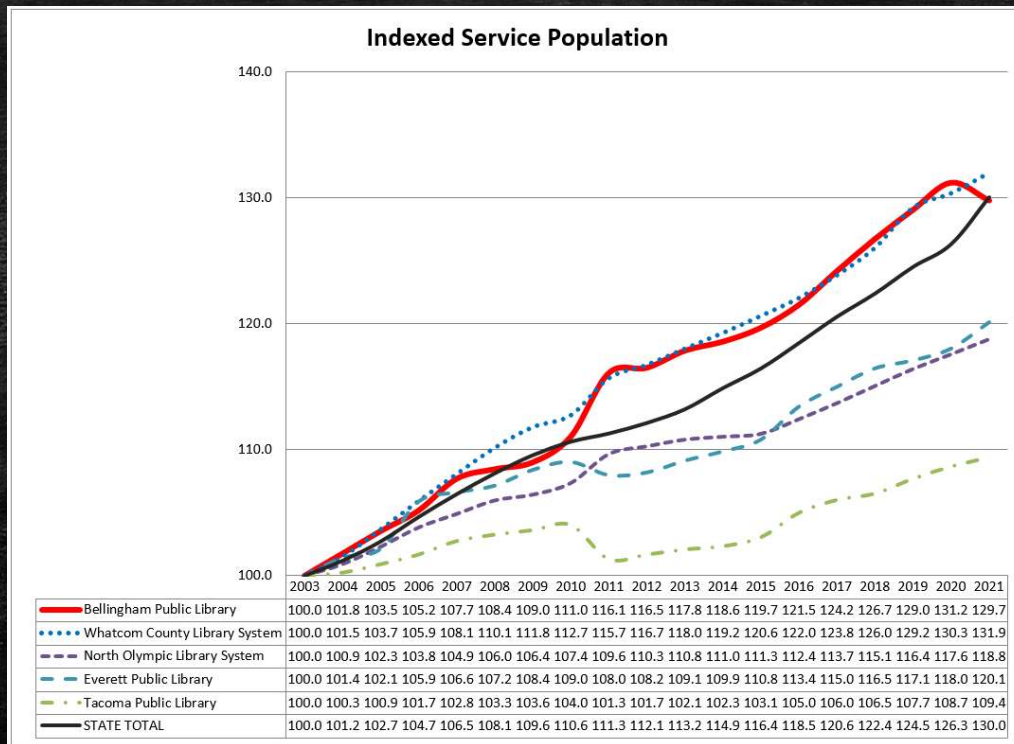
These terms are helpful to know when discussing library stats



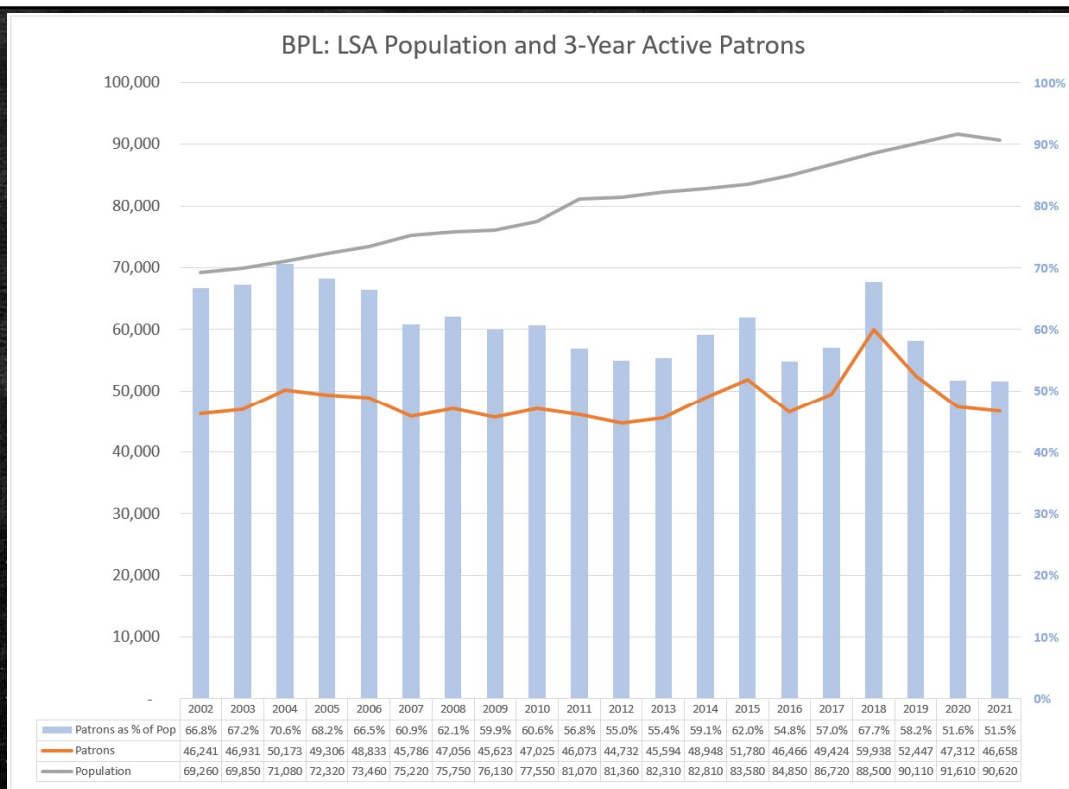
First, some data that doesn't come from the State Library. This chart shows the Legal Service Population for Bellingham (starting in 1903...). This shows that over the past 110 years Bellingham has had three phases of growth: (first line) 1910 – 1960 was slow. (second line) 1960 to 1990 sped up a bit. (third line) 1990 to 2010 growth really took off. The 2020 value is the OFM estimate, which turns out to have been a little high. How does this relate to library services? It tracks who we should be serving, and we can compare other service metrics to it.



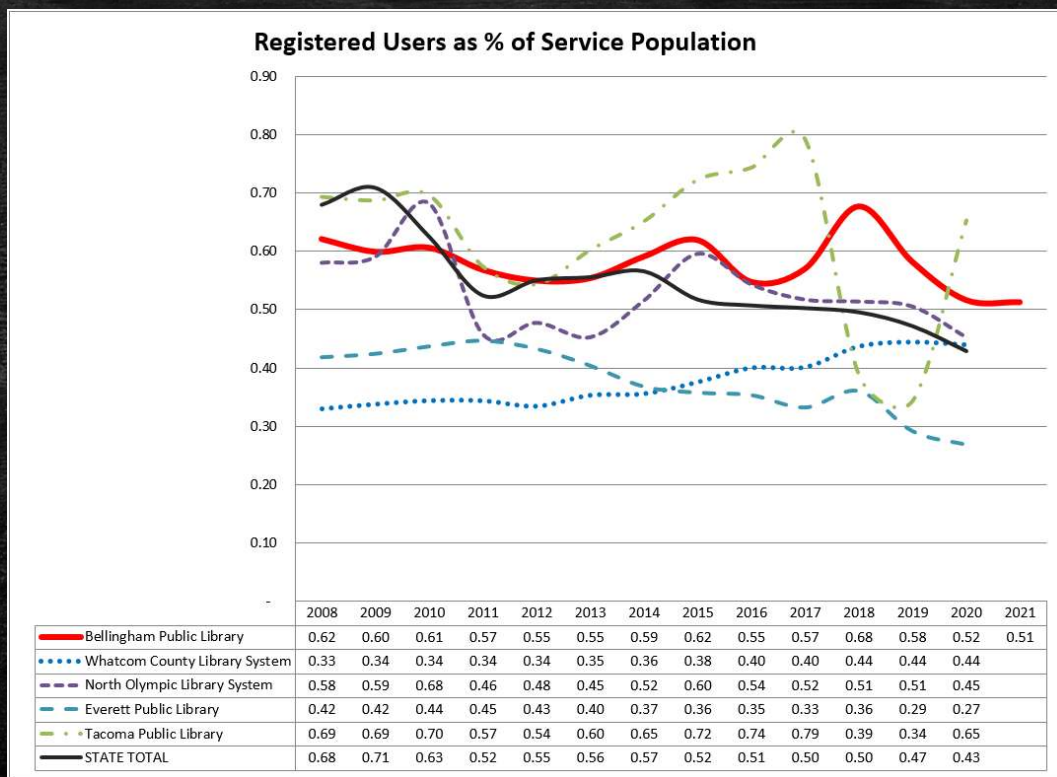
This is an example of a comparison chart from the merged data file. It shows LSA Population from 2009-2021 for five libraries. A new estimate of population is generated yearly by the Washington Office of Financial Management. From 2009 to 2020 they estimate Bellingham grew by 15,000 residents. That takes into account births, death, people moving in and out of the city, and Annexations – the City does occasionally get bigger, taking land away from unincorporated Whatcom County. The 2021 value is informed by the 2020 US Census results. It's clear that OFM slightly over-estimated Bellingham's growth over the past decade, as the 2021 estimate is down by 990.



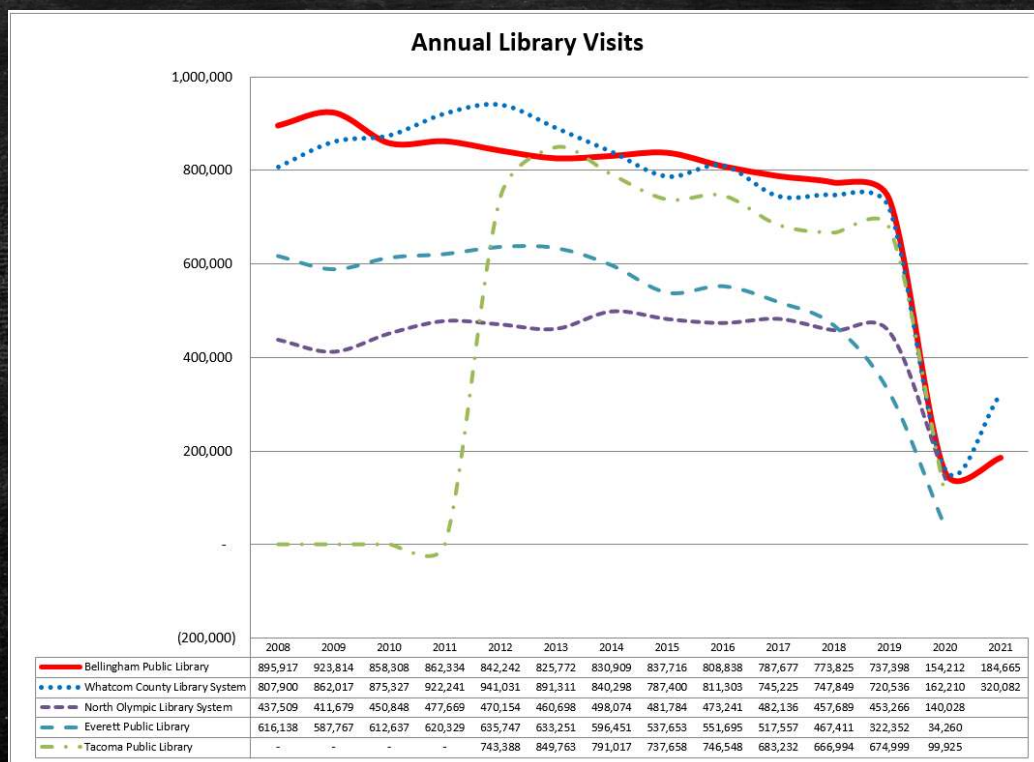
A different way to look at the LSA Population numbers is to show the rate of change relative to a start point. The WA OFM had an estimated rate of growth for Bellingham during the oughts that was proven by the 2010 Census to be too low – hence the bump up for 2011. At that point our growth diverged from the State overall growth rate estimate. Everett and Tacoma’s both went down. Now the 2021 number is down from 2020, meaning that OFM’s growth estimate was too high during the ‘teens. Our growth from 2003 to 2021 has returned to being the same rate as the State as a whole.



This chart isn't in the merged workbook. It shows the OFM pop. est's with our reported 3-Year Active Patrons, and the annual rate of cardholdership. Our rate has fallen since 2002 from about 65% to about 52%. 2018 was an anomaly caused by not de-duplicating students with both a personal card and a ConnectED card. This shows BPL over time – how does our rate of cardholders compare with other libraries?

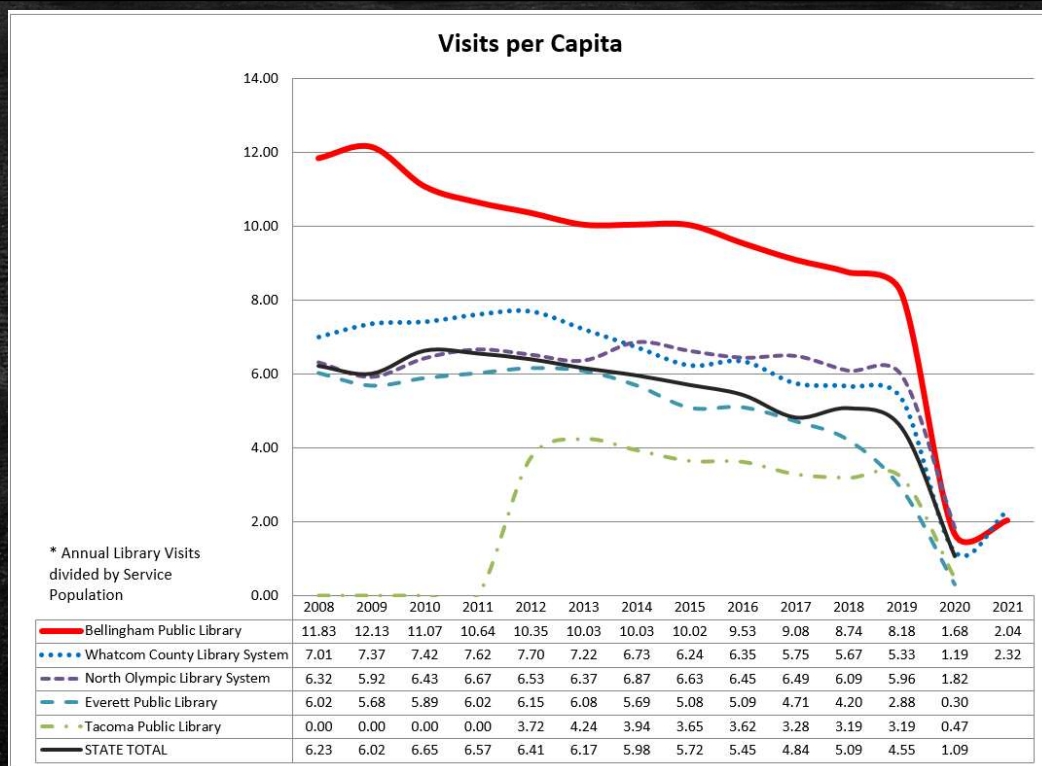


Here's that data from 2008-2020 compared to a few other libraries in the State. Our cardholder base has held steadier than that of the state as a whole. WCLS is catching up with us! No big change in 2021 due to the pandemic.



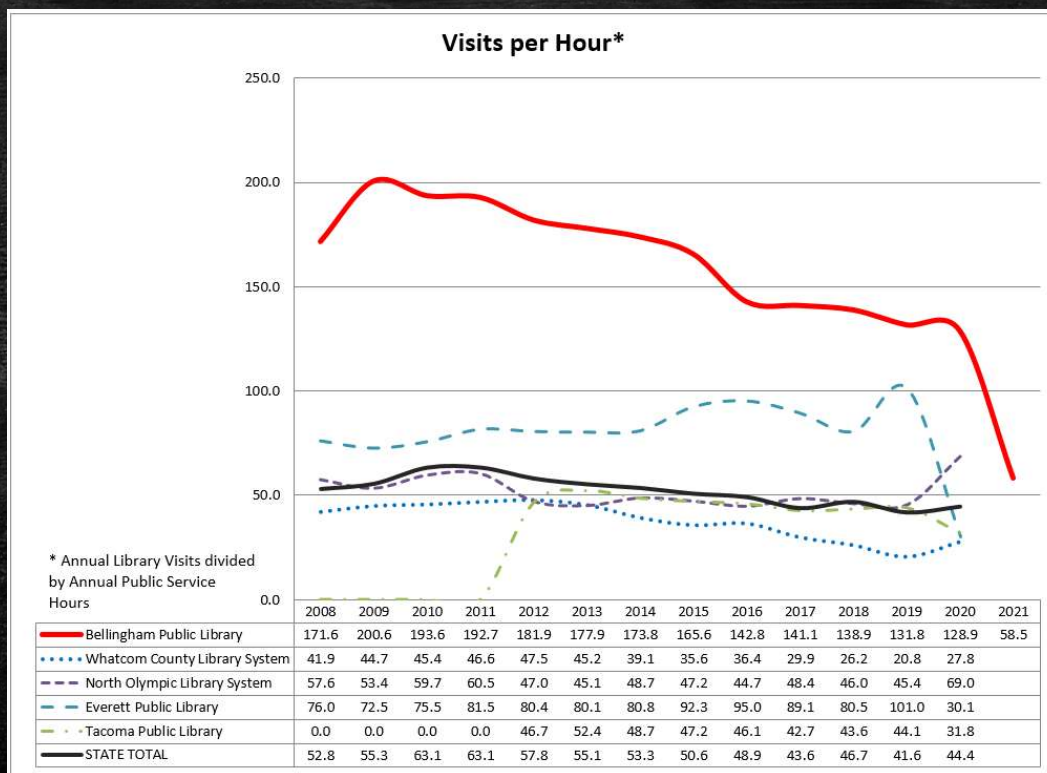
One thing we normally track is bodies in and out of our locations, divided by two to represent a 'Visit'. BPL's visits have been trending down since 2009. 2020 was a real dive with COVID 19, but we started to climb out of the hole in 2021, though not as rapidly as WCLS. As long as we recover over the long-run we'll be ok. In fact, I'd rather have a delay on this metric until the pandemic is truly behind us.

Note that our count of visits is higher than those of some cities with larger populations, like Everett and Tacoma.



When you normalize by population, BPL has really stood out! Some years we're twice the State average.

For 2020 and '21 we dropped an enormous amount, even when curbside visits are counted. In 2021 WCLS saw a value for visits per capita that was higher than BPL's for the first time in this timeseries.



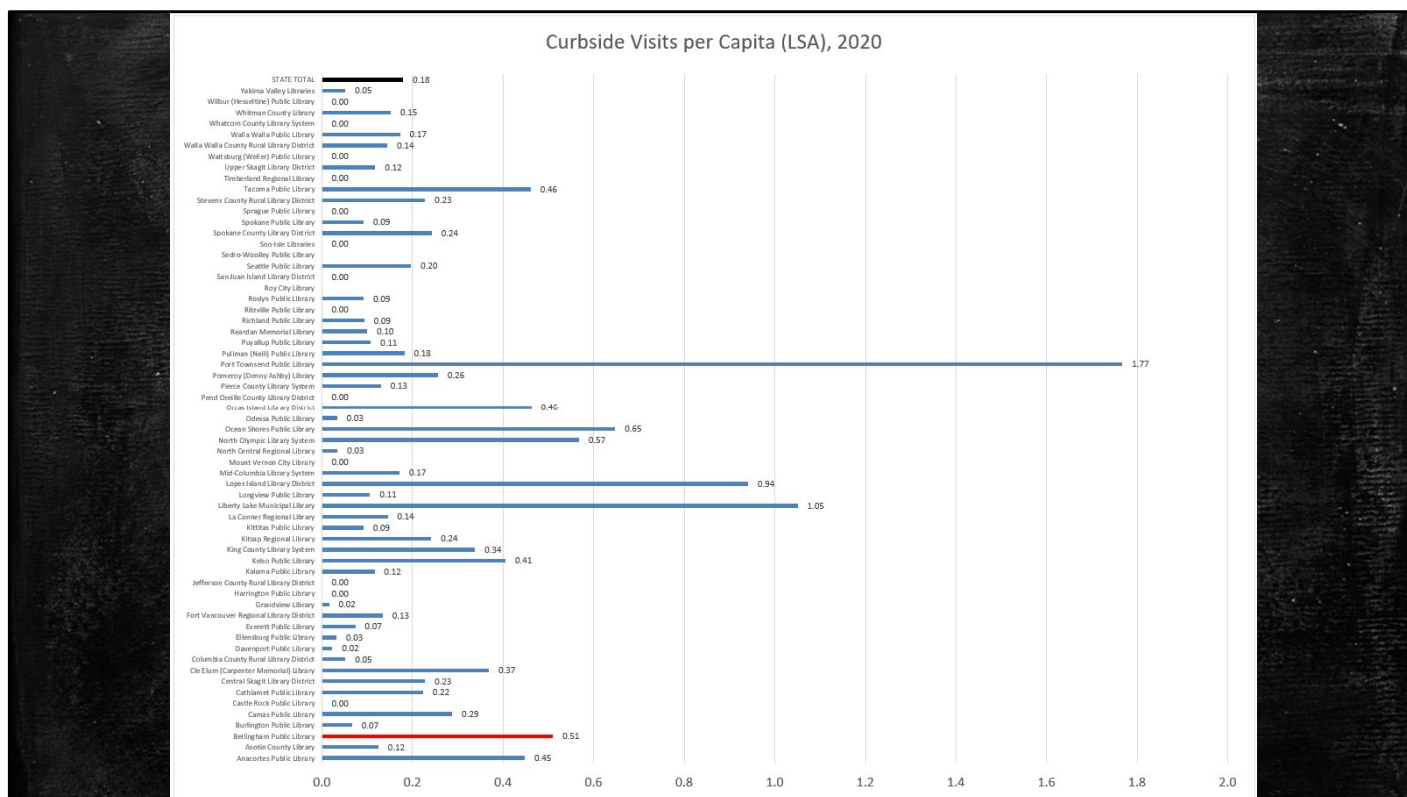
Visits per Open Hour are even more exceptional. We're more like 3 times the State average.

We didn't collapse in 2020 because our open hours contracted in line with the drop in Visits.

We tanked in 2021 because we added more hours and only increased visits by a bit. It's to be expected in a pandemic, when people don't want to crowd together.

(Hours aren't yet available from WCLS)

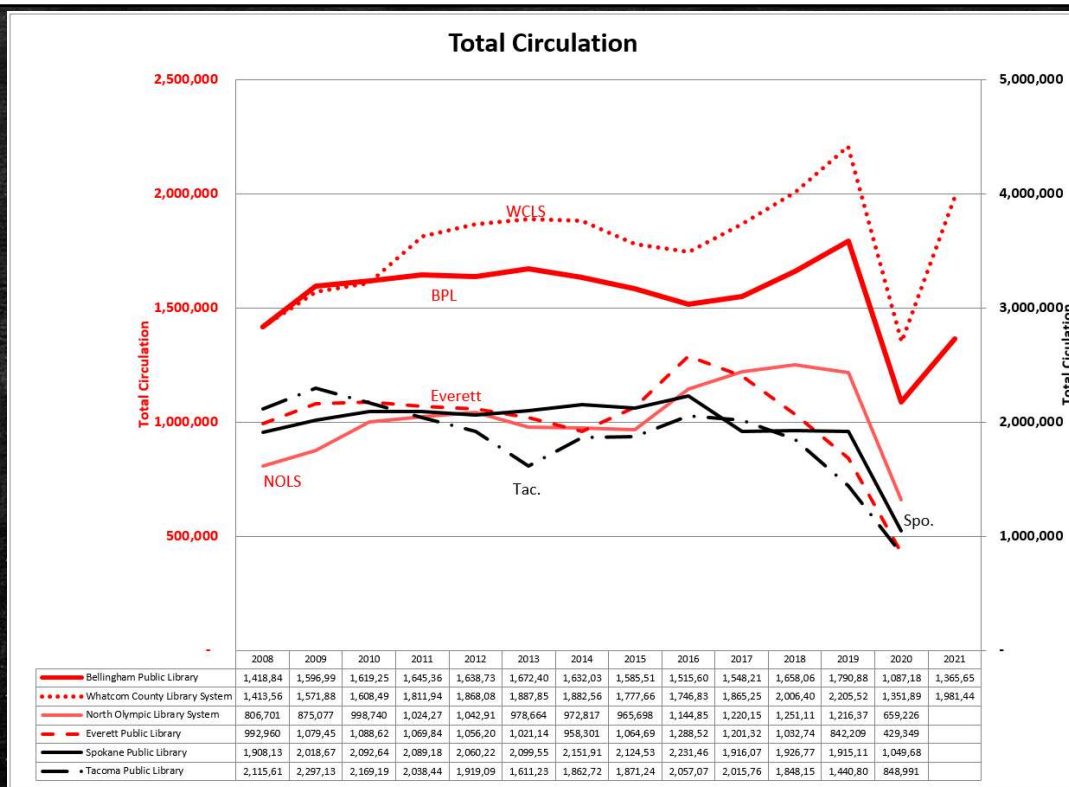
Visits per Open Hour																						
Name	FSCS	2002	2003	2004	2005	2006	2007	2008	2009	2010	2011	2012	2013	2014	2015	2016	2017	2018	2019	2020	2021	
Anacortes Public Library		107.07	142.76	142.76	143.59	52.22	55.11	52.71	60.18	53.27	87.52	52.79	58.50	56.04	54.16	27.39	58.55	#DIV/0!	#DIV/0!	31.01	#DIV/0!	
Asotin County Library		23.28	27.72	26.49	28.47	27.46	27.03	22.96	24.91	25.78	24.85	20.47	17.65	17.93	16.23	16.38	16.88	11.57	17.81	4.60	#DIV/0!	
Bellingham Public Library		39.98	139.38	145.07	137.68	154.53	163.36	171.63	200.57	193.57	182.74	181.91	177.33	173.83	165.62	142.80	141.06	138.93	131.77	128.94	58.51	
Burlington Public Library		21.00	31.52	31.40	33.46	37.42	63.22	62.63	94.01	81.26	79.06	74.41	68.64	65.01	74.57	63.19	59.27	59.70	56.96	58.41	#DIV/0!	
Camas Public Library		30.30	57.05	55.97	74.60	83.29	79.12	82.02	95.95	94.86	91.06	94.54	83.51	75.90	74.19	71.93	71.24	67.69	61.27	56.34	#DIV/0!	
Castle Rock Public Library		134	4.22	4.59	4.61	4.72	4.36	4.30	5.68	4.50	5.03	0.94	0.98	0.78	1.03	#VALUE!	-	-	#DIV/0!	#DIV/0!	#DIV/0!	
Cathlamet Public Library		#VALUE!	#VALUE!	-	-	27.52	23.51	15.83	15.38	13.51	10.84	12.02	6.58	6.40	3.00	11.05	10.71	8.98	8.30	4.14	#DIV/0!	
Central Skagit County District		#N/A	#N/A	#N/A	#N/A	#N/A	#N/A	#N/A	#N/A	#N/A	#N/A	#N/A	#N/A	#N/A	0.68	2.40	5.71	16.32	19.38	19.38	#DIV/0!	
Cle Elum (Carpenter Memorial) Library		12.11	10.58	16.38	15.13	14.52	14.41	14.75	14.81	15.05	15.11	15.30	17.01	13.03	12.55	12.72	12.53	11.46	10.93	11.20	#DIV/0!	
Columbia County Rural Library District		#N/A	#N/A	#N/A	#N/A	#N/A	#N/A	10.19	12.23	14.53	13.19	11.90	14.66	13.63	12.02	13.11	12.79	9.96	9.72	21.22	#DIV/0!	
Davenport Public Library		3.42	3.40	3.22	3.70	3.48	3.96	3.88	4.06	3.75	3.48	3.52	2.92	2.74	3.23	3.41	3.94	5.75	4.62	1.00	#DIV/0!	
Ellensburg Public Library		40.20	39.38	43.40	56.05	55.68	56.60	56.60	60.98	56.28	60.90	54.29	58.00	62.90	47.44	49.54	50.83	49.58	51.68	23.77	#DIV/0!	
Everett Public Library		63.80	71.03	76.53	76.04	79.91	79.64	75.35	72.46	75.52	81.49	80.43	80.12	80.78	82.32	84.98	89.11	80.48	80.89	30.05	#DIV/0!	
Fort Vancouver Regional Library District		43.72	57.19	55.41	58.32	54.19	54.84	55.11	61.16	73.92	63.37	67.95	64.63	62.49	55.29	45.07	58.29	57.67	50.92	50.27	#DIV/0!	
Grandview Library		19.78	20.44	17.81	15.15	16.35	15.68	15.32	16.77	15.45	-	27.76	28.48	27.33	25.18	22.09	20.62	19.35	17.75	4.74	#DIV/0!	
Harrington Public Library		12.46	10.76	10.76	10.64	10.72	11.23	16.79	19.22	20.10	8.74	5.00	15.29	4.09	4.25	5.05	4.17	3.70	#DIV/0!	#DIV/0!	#DIV/0!	
Jefferson County Rural Library District		30.63	28.77	29.06	30.55	31.23	33.79	33.51	40.80	45.03	59.88	55.01	32.35	44.36	45.17	45.60	44.98	41.80	40.59	20.40	#DIV/0!	
Kalama Public Library		3.66	3.74	3.92	4.00	4.08	4.64	4.64	4.64	5.11	5.08	4.69	4.83	4.67	3.66	#VALUE!	-	-	6.68	8.68	#DIV/0!	
Kelso Public Library		21.45	24.06	19.27	25.70	24.59	32.05	37.40	39.31	40.29	35.45	31.41	33.57	34.50	33.93	34.31	34.38	20.69	19.66	10.58	#DIV/0!	
King County Library System		#VALUE!	#VALUE!	-	86.17	75.06	72.62	72.62	67.03	67.27	71.96	68.29	64.93	65.44	63.84	65.96	63.65	63.87	61.02	59.46	#DIV/0!	
Knap Regional Library		62.13	68.63	69.05	64.37	72.93	69.23	72.26	64.62	62.63	61.71	57.91	56.45	59.20	49.89	49.60	50.71	49.97	51.41	52.72	#DIV/0!	
Kittitas Public Library		3.27	1.96	3.97	4.60	2.82	2.41	2.41	3.05	2.98	#DIV/0!	2.59	2.93	3.10	2.93	2.28	2.33	2.05	2.97	1.37	#DIV/0!	
La Conner Regional Library		17.62	11.28	10.60	9.49	13.63	19.22	19.91	20.22	20.82	19.12	18.12	16.52	16.31	16.23	15.58	14.38	13.29	12.74	12.68	#DIV/0!	
Longview Public Library		#N/A	#N/A	4.86	8.78	16.02	17.27	22.85	20.20	21.31	19.08	22.86	22.71	22.78	23.17	23.62	26.74	33.06	27.27	62.20	#DIV/0!	
Loveland Public Library		96.13	90.57	102.25	96.59	91.94	91.06	95.28	90.97	71.54	70.93	76.11	69.96	79.60	80.61	81.39	74.90	78.95	73.60	64.66	#DIV/0!	
Lopez Island Library District		11.95	13.51	15.09	14.64	13.77	17.55	22.19	28.33	31.59	29.75	26.46	27.66	31.27	27.41	26.91	25.59	25.69	22.24	15.04	#DIV/0!	
Mid-Columbia Library System		#VALUE!	#VALUE!	-	-	64.27	69.49	72.37	83.76	90.52	89.77	84.80	52.47	42.17	43.26	36.73	34.93	33.33	29.62	29.27	#DIV/0!	
Mount Vernon City Library		57.19	62.68	64.40	63.25	63.61	62.79	65.09	73.38	75.39	75.75	72.77	66.68	71.54	67.40	59.72	53.65	53.88	51.20	41.20	#DIV/0!	
North Central Regional Library		13.19	13.87	15.25	15.64	14.72	13.54	16.85	18.18	24.75	20.71	22.86	21.61	22.03	20.64	17.34	18.11	15.98	16.50	15.25	#DIV/0!	
North Olympic Library System		51.95	53.90	57.27	56.07	50.72	50.96	57.57	52.40	59.71	60.60	47.02	45.06	49.72	47.17	44.73	48.41	45.96	45.43	58.98	#DIV/0!	
Ocean Shores Public Library		16.26	20.07	22.46	22.71	23.10	22.98	23.54	30.41	29.13	23.64	25.04	26.85	25.84	29.19	30.08	26.07	28.56	20.91	51.10	#DIV/0!	
Odessa Public Library		3.45	6.68	3.95	2.07	3.10	3.10	3.60	3.00	3.80	4.00	3.95	3.65	3.95	4.23	3.08	2.75	3.32	2.45	2.20	#DIV/0!	
Orcas Island Library District		24.04	26.04	37.78	54.41	55.18	55.04	58.16	56.56	55.18	52.72	49.58	50.73	50.80	49.58	49.35	45.29	43.25	44.53	43.42	#DIV/0!	
Pend Oreille County Library District		12.04	12.59	12.07	12.21	11.96	11.65	11.53	14.16	15.63	16.46	17.18	19.66	19.27	16.90	13.86	13.06	13.87	13.96	13.91	#DIV/0!	
Pierce County Library System		58.65	53.25	51.08	59.47	56.48	41.20	47.77	55.44	56.39	52.39	47.77	48.10	47.54	46.76	42.47	39.66	42.80	39.24	58.05	#DIV/0!	
Pomeroy (Denny Ashby) Library		3.14	3.75	4.68	4.51	4.94	4.92	4.90	4.88	4.93	5.01	5.58	5.25	5.02	4.32	4.18	4.41	4.44	4.46	2.74	#DIV/0!	
Port Townsend Public Library		#VALUE!	#VALUE!	-	63.35	63.79	66.16	62.96	65.39	60.66	63.71	140.68	133.83	101.97	101.92	111.60	102.57	101.95	104.44	107.41	106.19	#DIV/0!
Pullman (Nell) Public Library		56.63	56.83	63.35	63.79	66.16	62.96	65.39	60.66	63.71	140.68	133.83	101.97	101.92	111.60	102.57	101.95	104.44	107.41	106.19	#DIV/0!	
Puget Sound Public Library		61.91	124.18	102.57	103.37	99.48	154.11	157.98	151.27	129.60	125.69	130.84	118.06	117.34	115.37	114.46	98.69	104.85	106.94	55.50	#DIV/0!	
Reardan Memorial Library		3.07	3.23	3.51	4.72	5.13	4.80	4.68	5.22	10.49	6.96	5.45	4.89	4.90	4.50	4.60	3.95	3.64	3.49	2.75	#DIV/0!	
Richland Public Library		89.17	91.18	94.52	100.44	89.31	89.18	-	43.09	245.58	192.50	194.96	195.07	185.40	193.64	192.73	75.35	72.96	78.16	#DIV/0!		
Riverview Public Library		8.14	9.50	9.90	9.97	9.97	9.97	9.75	8.53	7.19	6.72	6.63	5.78	5.96	6.67	6.55	5.84	6.38	6.58	1.96	#DIV/0!	
Royston Public Library		3.34	4.04	4.69	4.81	4.52	4.64	3.98	4.59	5.92	6.06	6.02	6.85	6.91	6.80	6.51	8.82	3.77	10.41	8.46	#DIV/0!	
Roy City Library		2.71	2.23	2.81	4.01	4.57	3.98	2.95	3.03	4.85	4.40	3.28	2.98	3.10	3.25	2.95	2.87	#N/A	#N/A	#N/A	#N/A	
San Juan Island Library District		19.79	19.60	19.68	19.59	27.09	37.53	39.22	41.04	40.87	40.77	41.28	42.82	40.73	40.43	40.29	38.94	39.11	37.04	43.24	#DIV/0!	
Seattle Public Library		60.60	94.48	143.10	160.61	82.06	81.66	91.65	99.33	121.74	109.11	104.34	99.61	97.16	90.69	80.62	76.00	77.60	72.25	71.24	#DIV/0!	
Sedro-Woolley Public Library		18.65	19.16	20.29	22.90	23.66	25.59	30.04	33.95	34.27	35.96	34.56	33.26	33.80	33.03	32.20	33.58	#N/A	#N/A	#N/A	#N/A	
Sno-Isle Libraries		#VALUE!	50.82	55.41	56.66	59.27	54.07	56.16	59.16	63.20	61.43	60.52	57.79	57.43	54.08	55.76	50.07	49.19	46.32	138.12	#DIV/0!	
Spokane County Library District		36.68	39.64	41.24	43.13	50.69	51.68	53.81	57.11	58.21	58.34	54.30	53.16	52.43	51.21	51.48	43.75	47.36	40.97	58.65	#DIV/0!	
Spokane Public Library		62.21	61.14	-	60.70	60.92	76.82	62.17	62.22	60.70	60.27	76.15	66.93	65.72	65.90	65.15	64.63	66.69	68.59	29.59	#DIV/0!	
Sprague Public Library		0.21	0.21	0.21	0.44	0.47	1.22	1.02	0.99	1.06	1.07	1.07	1.06	1.68	2.20	2.28	1.75	#DIV/0!	-	#DIV/0!	#DIV/0!	
Stevens County Rural Library District		12.64	13.96	13.80	17.66	21.50	21.50	17.03	18.91	18.87	20.57	19.84	21.28	26.23	22.00	20.45	23.45	24.74	24.02	28.27	#DIV/0!	
Tacoma Public Library		51.23	53.25	58.38	55.83	52.49	#DIV/0!	50.83	#DIV/0!	#DIV/0!	#DIV/0!	46.72	52.37	48.74	47.22	46.08	42.74	43.56	44.13	31.82	#DIV/0!	
Timberland Regional Library		45.61	47.18	49.04	46.06	47.52	45.05	50.83	#DIV/0!	#DIV/0!	#DIV/0!	53.22	56.50	49.82	45.71	43.04	39.59	-	-	-	#DIV/0!	
Upper Skagit Library District		#N/A	#VALUE!	26.79	-	-	-	-	11.76	14.29	13.96	13.65	15.52	14.03	17.24	18.49	17.70	17.27	14.83	9.05	#DIV/0!	
Vatsburg (Veller) Public Library		7.28	7.32	6.89	7.31	7.31	7.31	7.31	7.69	-	-	-	-	-	#VALUE!	-	-	#DIV/0!	#DIV/0!	#DIV/0!	#DIV/0!	
Valla Valla County Rural Library District		3.12	3.81	3.54	3.89	3.62	3.96	4.06	4.20	4.34	5.08	5.18	5.91	5.36	4.67	4.23	4.14	4.26	3.49	7.44	#DIV/0!	
Valla Valla Public Library		#VALUE!	#VALUE!	71.9																		



The pandemic has led to changes in what data the Institute for Museum and Library Services (IMLS) and the State Libraries are asking libraries to report. Added for 2020 were over a dozen new questions specifically related to service during the pandemic. Offering 'curbside' service was a common option for libraries, and we were asked to report on whether or not we offered curbside service, and if so, how many hours of curbside services were offered, and how many patron visits we had.

So here we have all 60 WA public libraries and a calculation of how many Curbside Visits per Capita each offered. BPL was in the top 10% (6th). WCLS did not report a count of curbside visits.

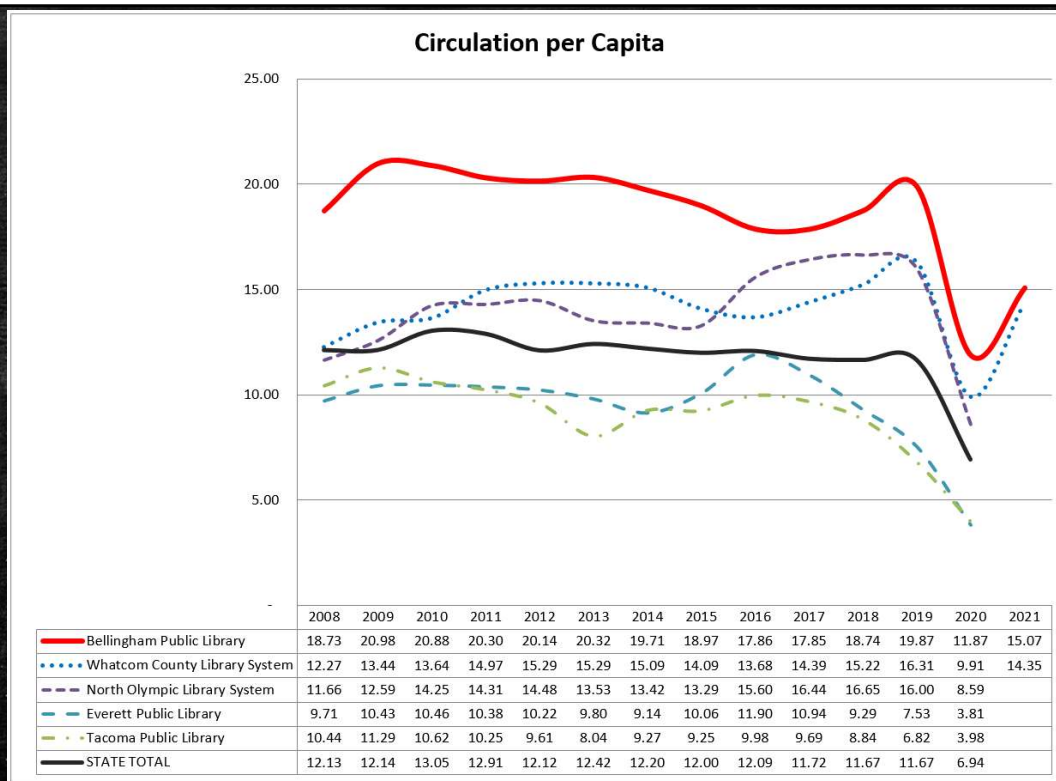
Patrons do more than just visit our buildings, though, and we try to measure other sorts of use, like how many things our patrons borrow.



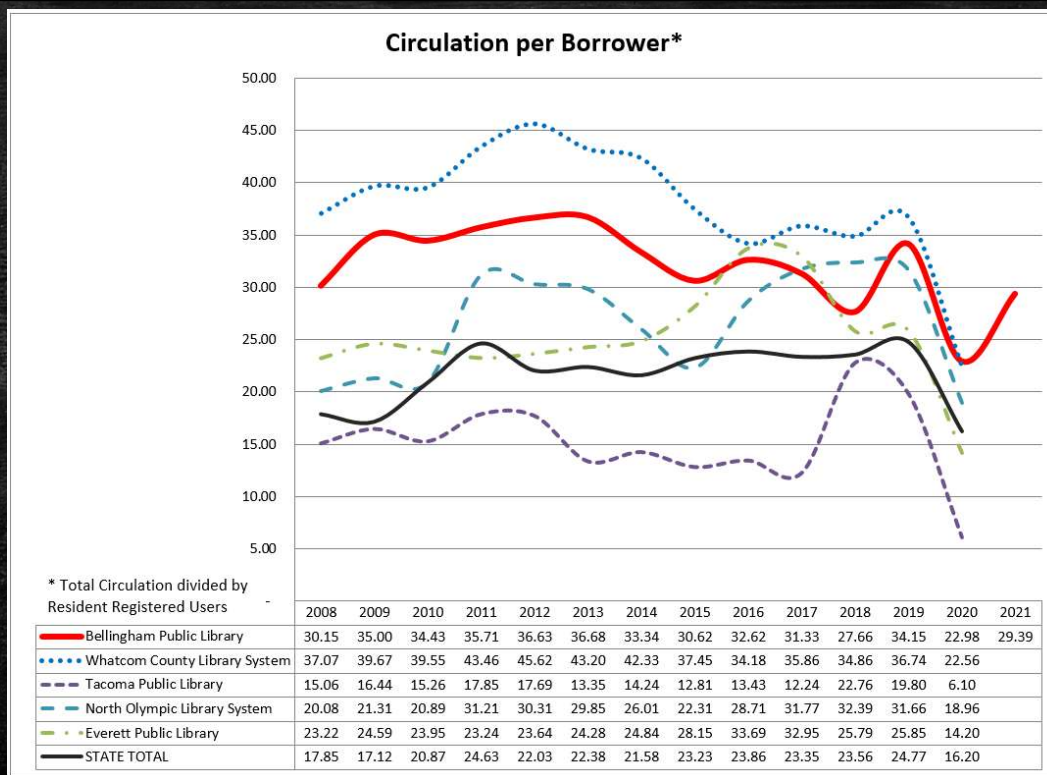
This compares BPL's total circulation to 3 libraries with similar-sized circulation, and 2 libraries, Spokane and Tacoma, with larger circulation, shown on a 2nd Y-Axis. BPL had a few years of declining circulation in the middle 20-teens, but the 3 years to 2019 saw increases when ebooks are included.

2020 was a disaster, literally, but honestly circulation didn't drop as much as I'd feared. The bounce in 2021 is really remarkable, considering how much of the year we were curbside-only.

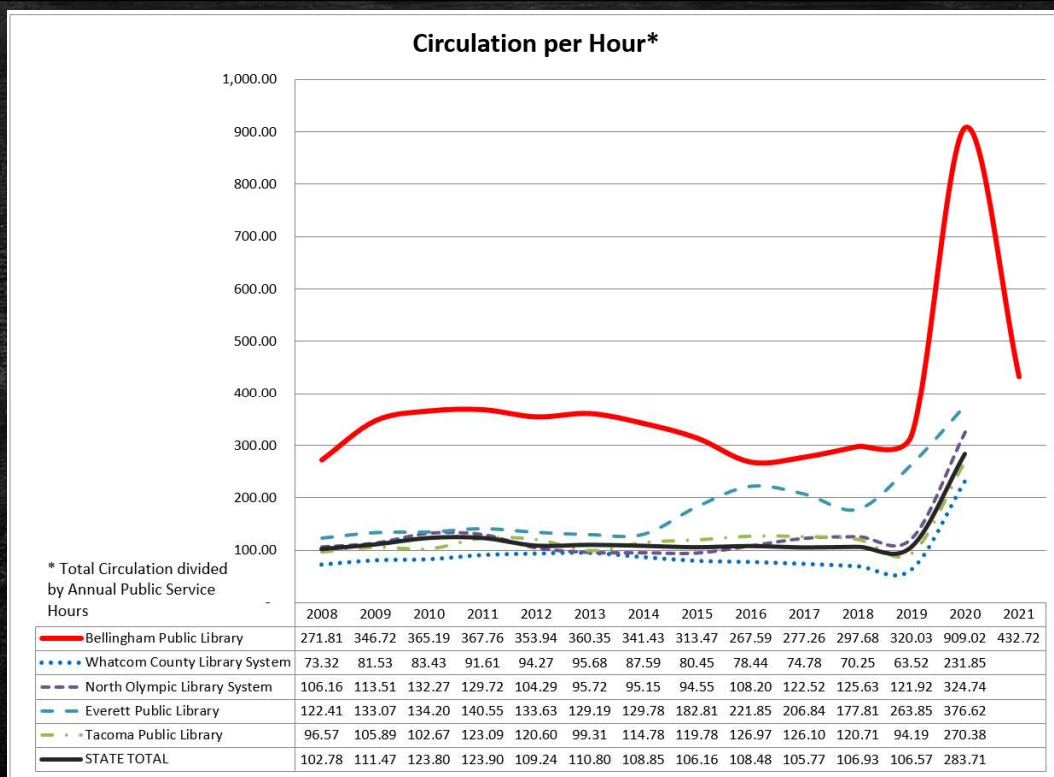
This again doesn't really show the intensity of circulation at BPL, though. Again it helps to use per Capita-type comparisons....



Circulation per Capita is a common metric, which shows us well above the State average. These libraries kept their same order on this measure during the first year of the pandemic. It'll be interesting to see how much the others regained in 2021. BPL recovered a little under halfway.

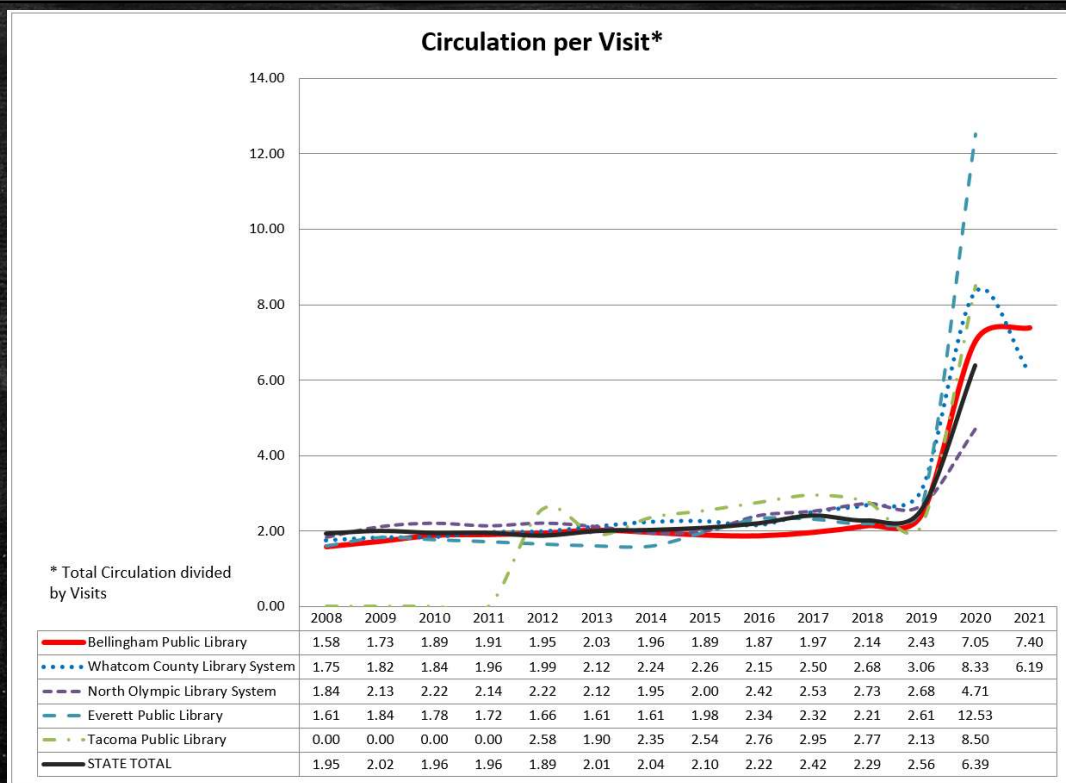


Circulation per Borrower is a less-common comparison. WCLS's cardholders had been borrowing at a higher rate than BPL's cardholders, both well above the State average, but the pandemic evened us up for 2020. .

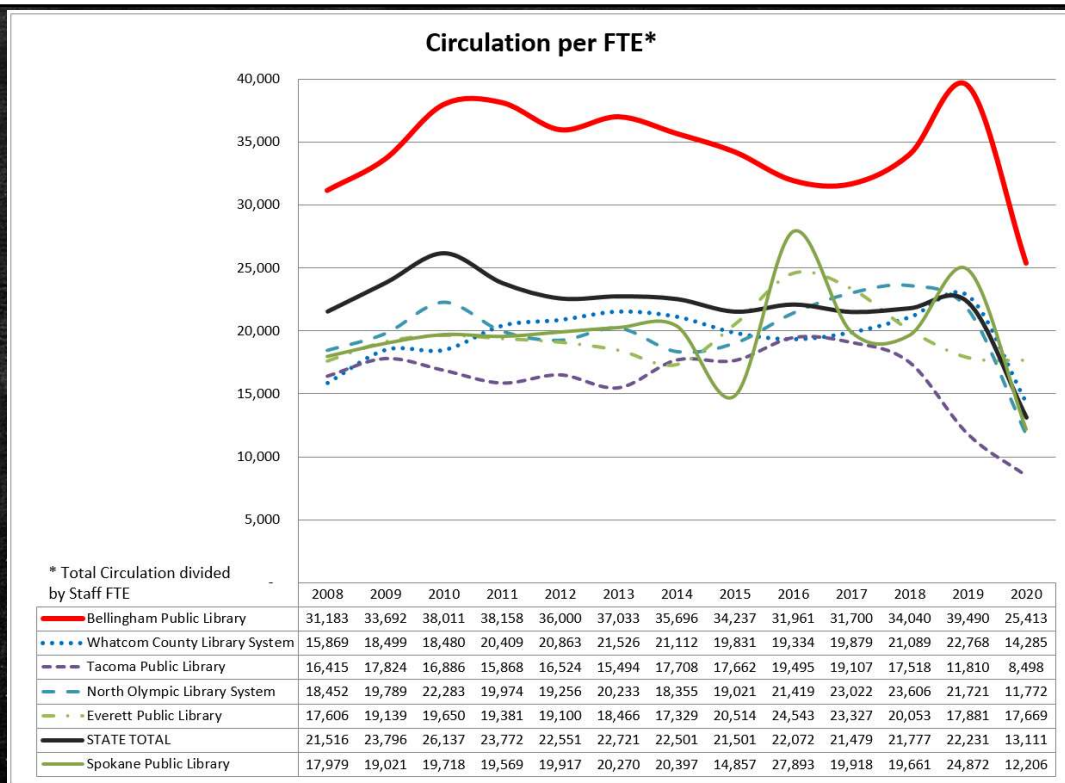


Do we seem busy? Yes! Circulation per Hour puts us well outside the norm, again suggesting that use of our available hours is much more intense than in many other libraries.

2020 was extraordinary, while 2021 return to a point more in the realm of sustainable workload.

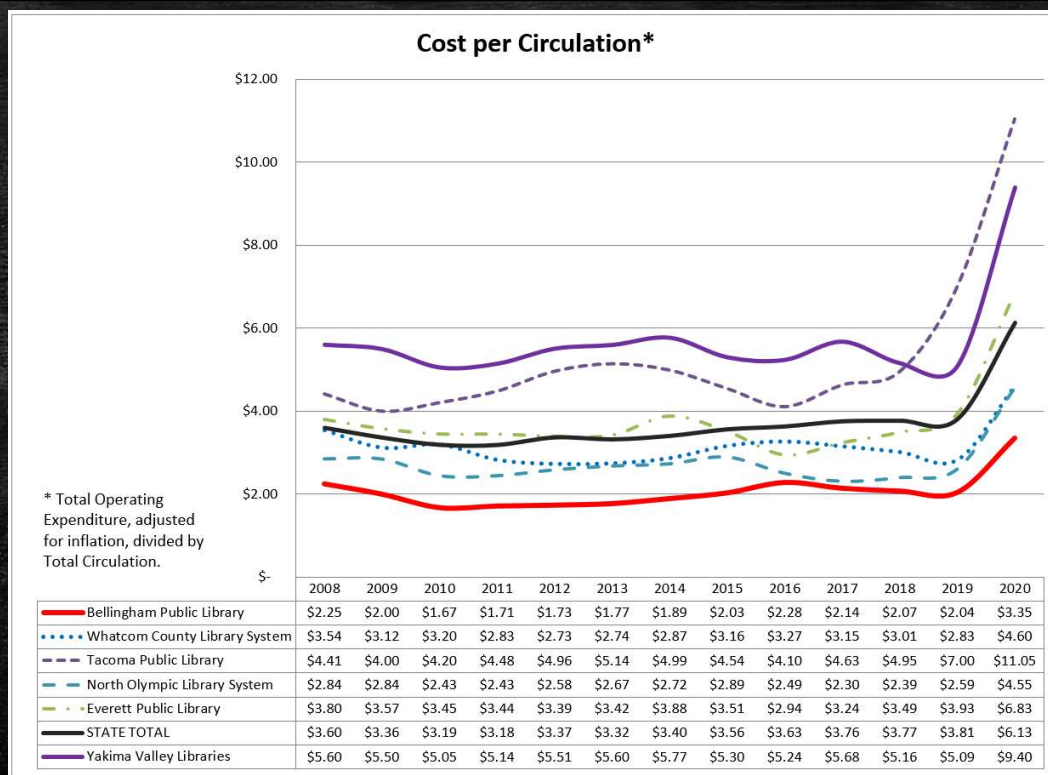


A major driver of that change was a change in patron behavior from borrowing about 2 items per visit, to borrowing from 5 - 12 items per visit. The State average leapt up to 6.4 from 2; both BPL and WCLS saw large increases in 2020. WCLS decreased in 2021, while BPL increased a little bit more. Both during curbside and after, with in-person visits, we see people borrowing more items at once, and visiting less frequently. Note that 'Total Circulation' includes e-materials. A comparison based on physical materials would likely be a little bit different, but not hugely.

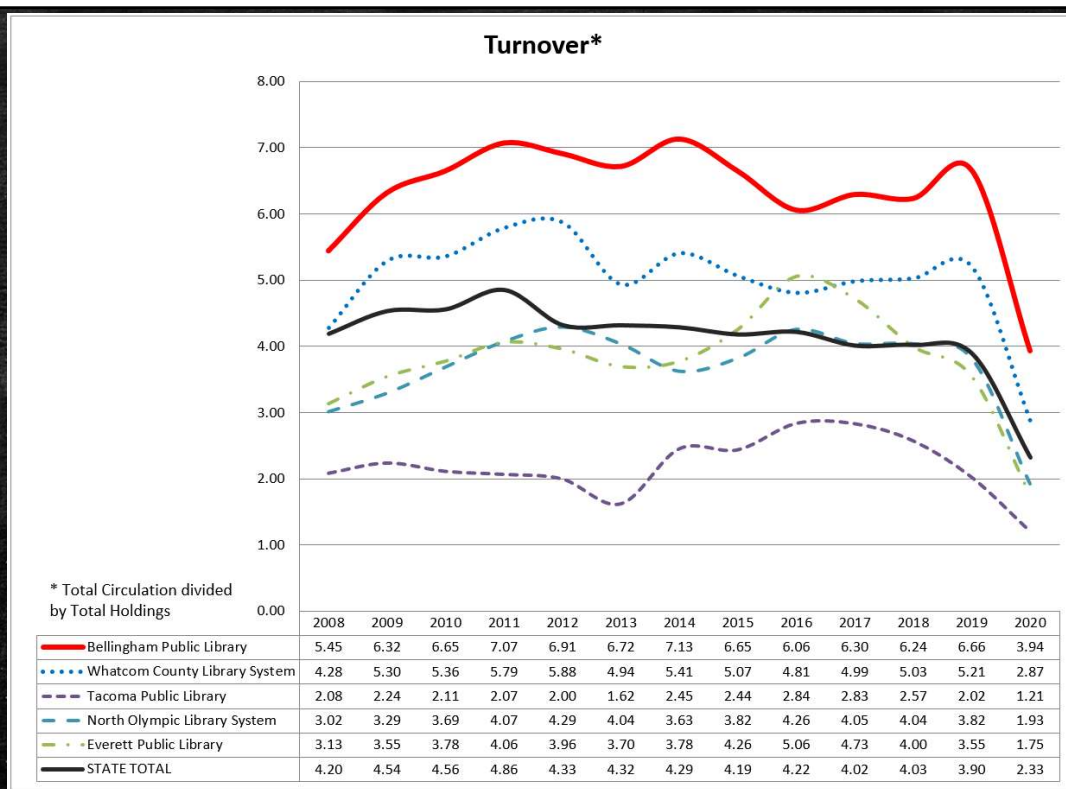


Are we efficient with our use of employees? Yes!

Running curbside service takes a lot more staff time per circulation, but even with our drop in efficiency, other libraries dropped as much or more.



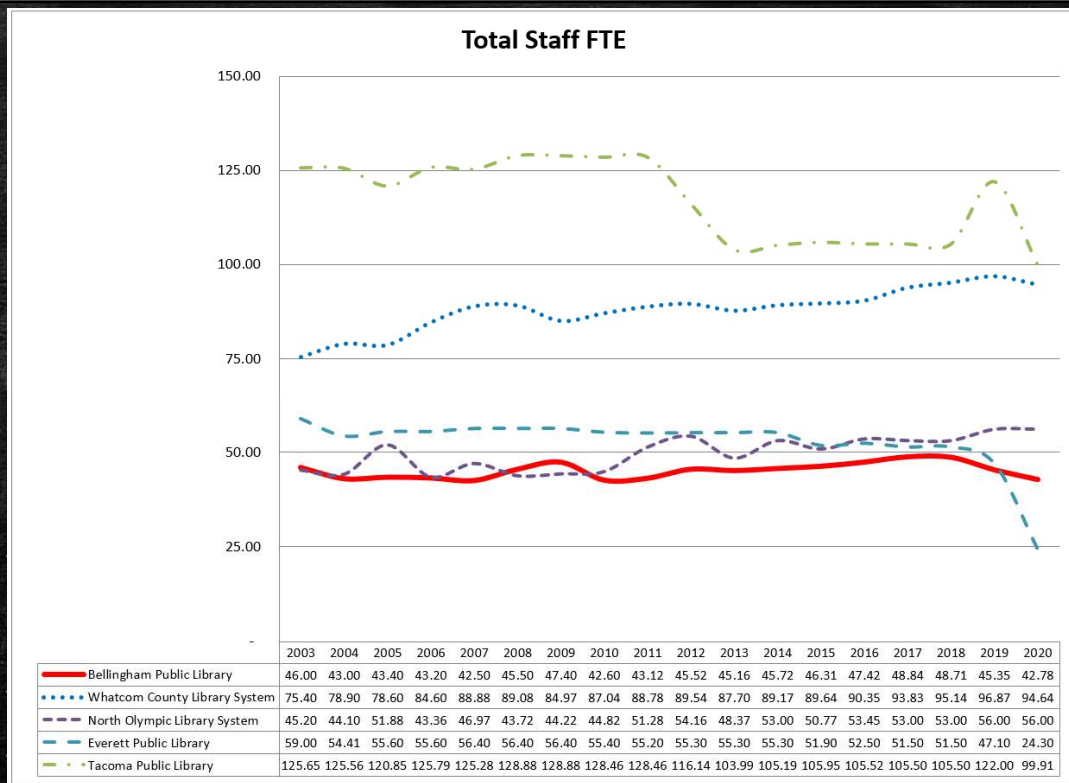
How about our value for the dollar? Well, if your measure is circulation, we're exceptional. Many libraries spend much more per circulation. Our 2020 Cost per Circ. rose to just below where the State average was pre-pandemic.



Is our collection getting used, or is it sitting around getting dusty? Turnover provides a way to look at intensity of use of the collection. Ours has been substantially above the State average for over a decade. This shows our collection is getting substantial use relative to other libraries in the state.

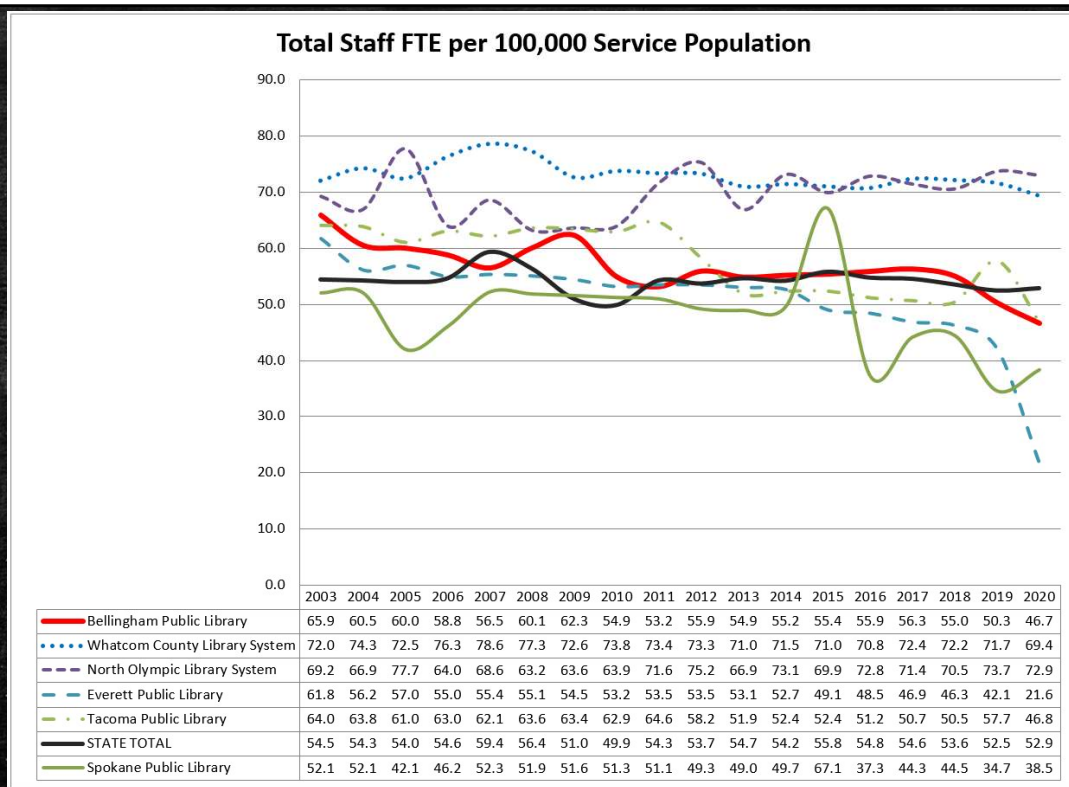
In 2020 our Turnover dropped to where the State average was pre-pandemic. We should pick back up in the 2021 data.

Total Holdings include e-materials. The State Library provides us with the correct counts from Overdrive, and we haven't received that info. yet (2/7/22).

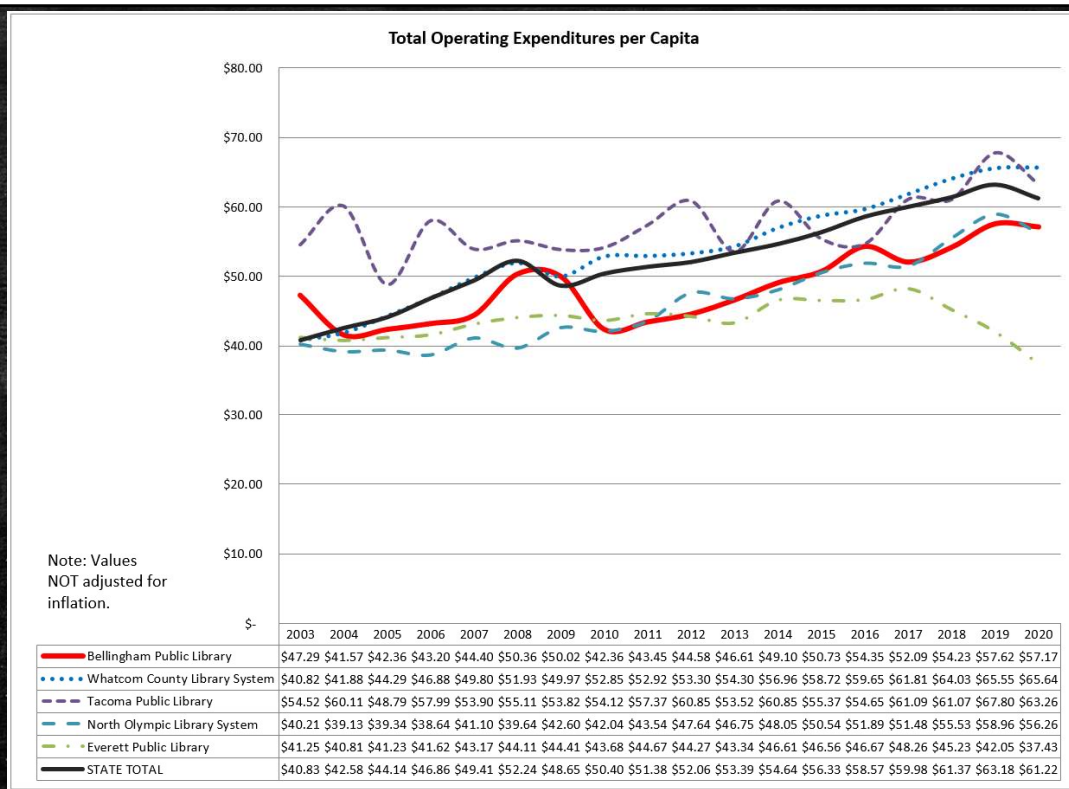


How about staff – how do we compare to others? We’re pretty low compared to this group.

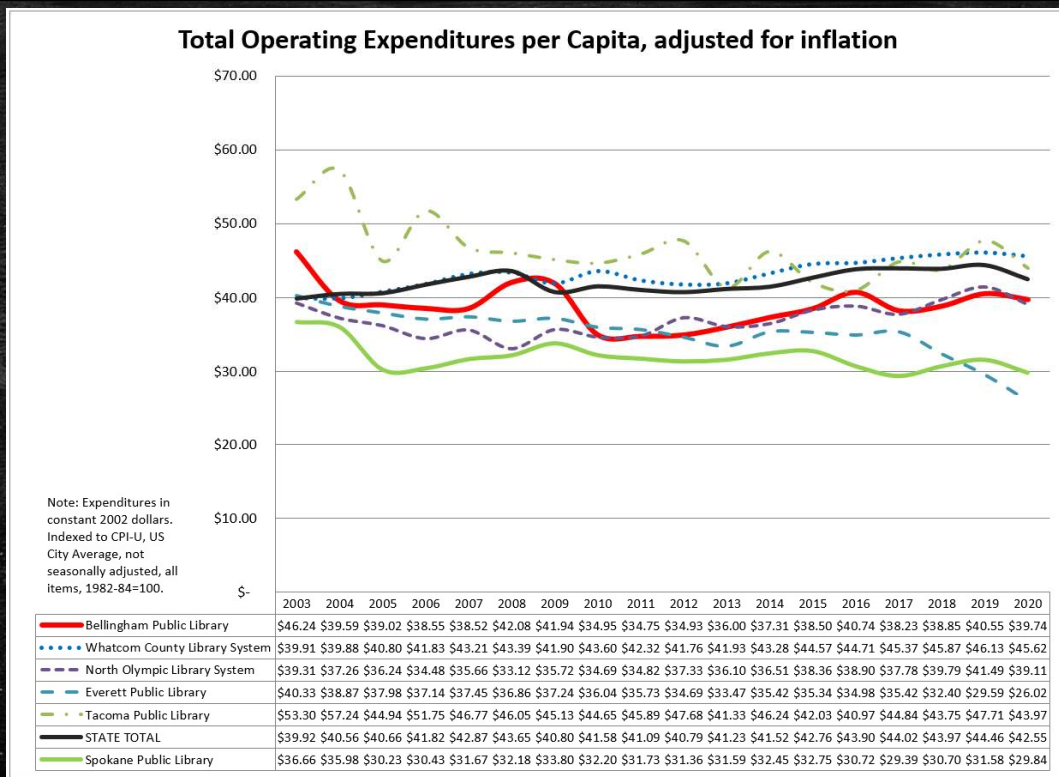
The pandemic had greater impacts on some libraries, less on others. BPL had relatively minor impacts.



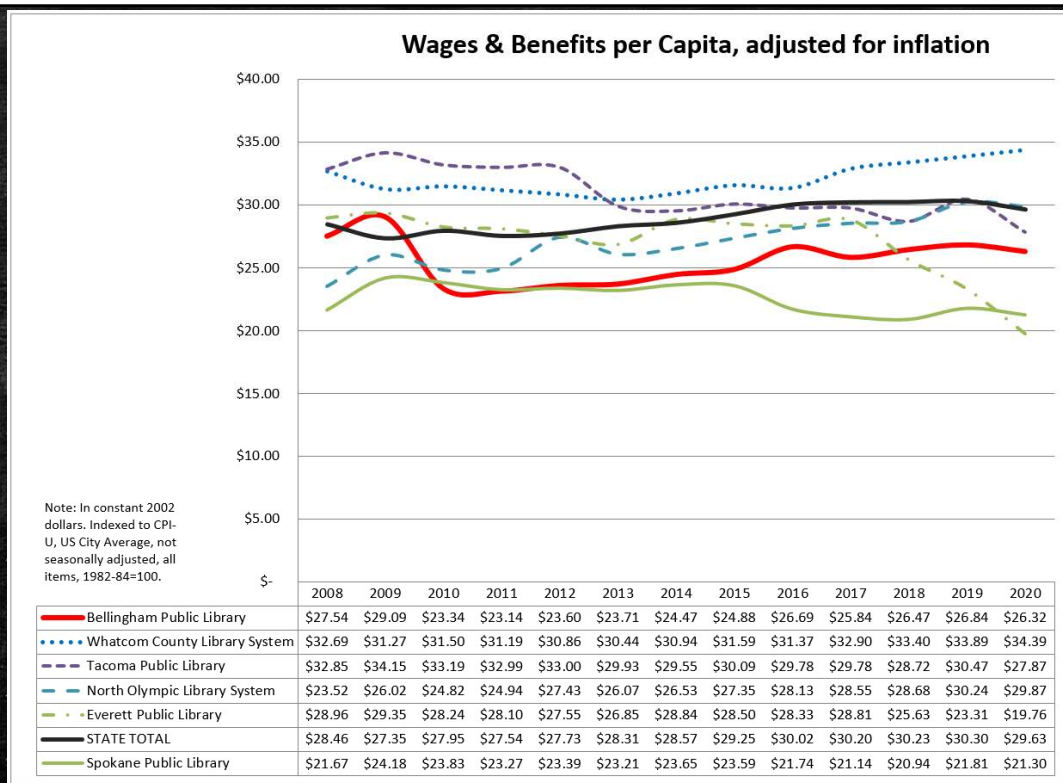
But when you normalize for population, we're right at the State average. Remember, though, that our circulation is bounds above other libraries on a per capita basis... Because we're part of the City, some of our needs are met by City staff who aren't reflected in the Staff FTE metric. That work IS captured in our Operating Expenditures, though, due to charge-backs within the City budget.



But still we're below the State average expenditure per capita

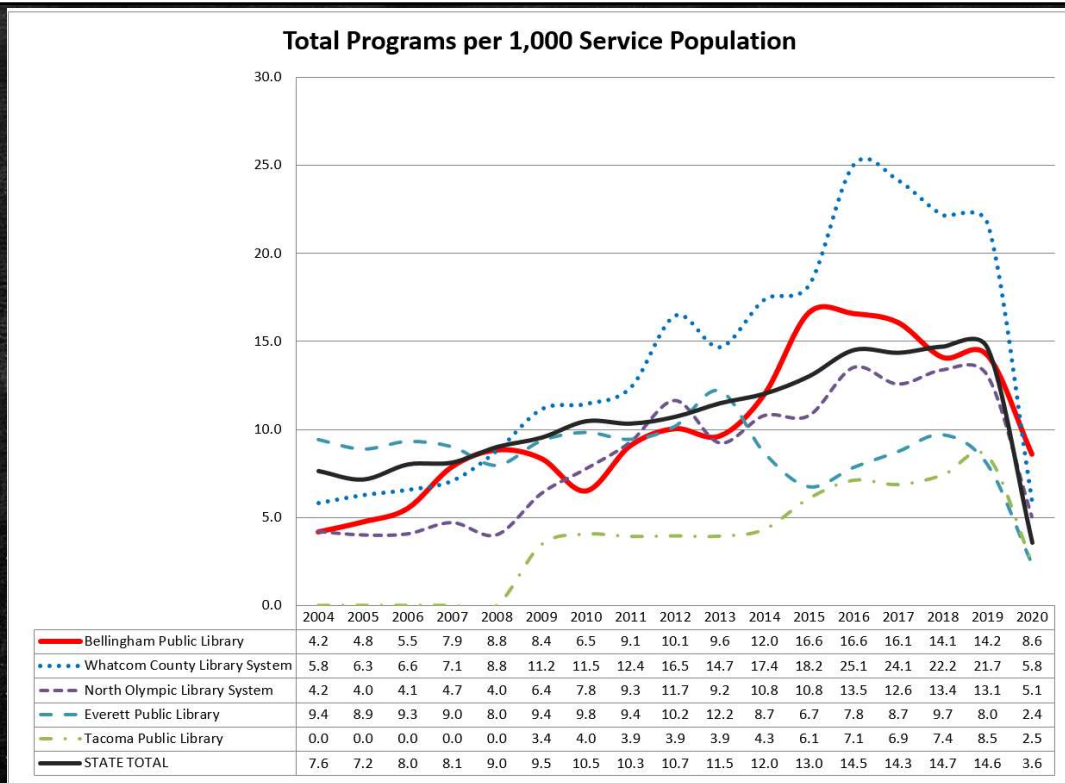


And if you adjust the expenditure values for inflation, our per capita outlays in recent years have been below where we were in 2008, which is in-turn below 2003. But we've been making some progress since hitting a low point in 2011.



And looking just at what we're paying for our employees, the situation is nearly the same – for the past decade we've been below the State average.

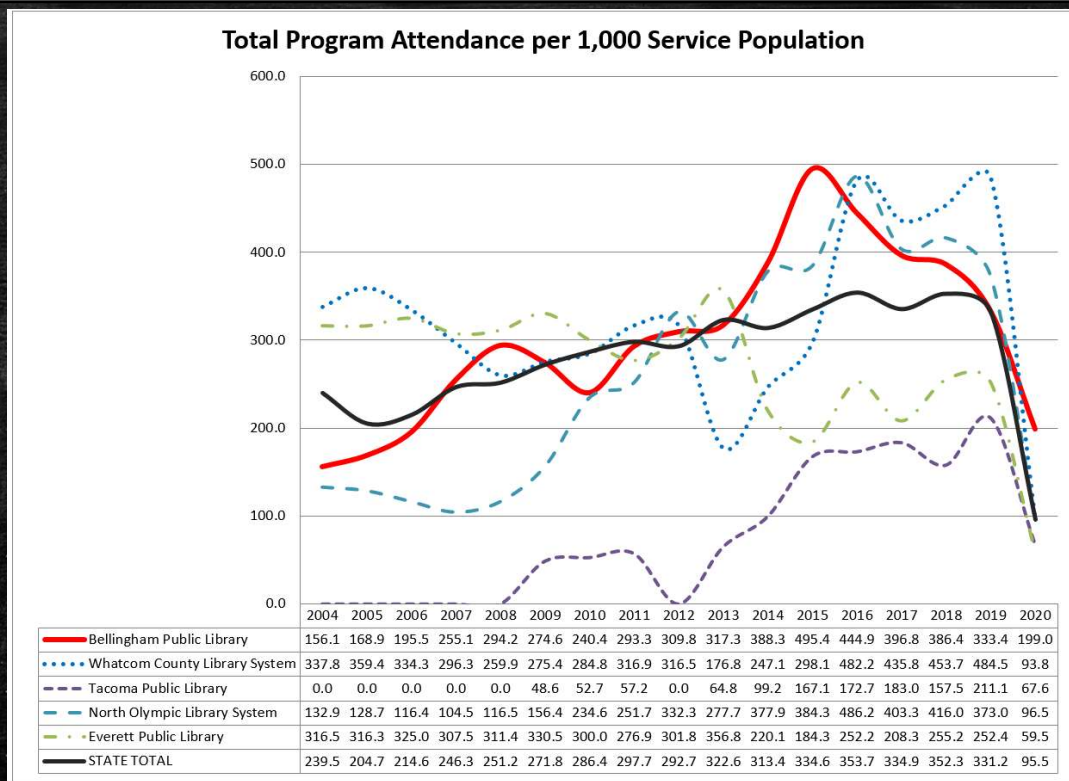
So how are we doing so much? In order to manage all that circulation, we must be not doing a lot of other things that other libraries do, right? Like how about programs for the public?



Well, no. We offer programs right around the State average number of programs per capita.

During the first year of the pandemic our number of programs dropped off substantially less than some other libraries and the State average.

Maybe nobody comes to our programs?



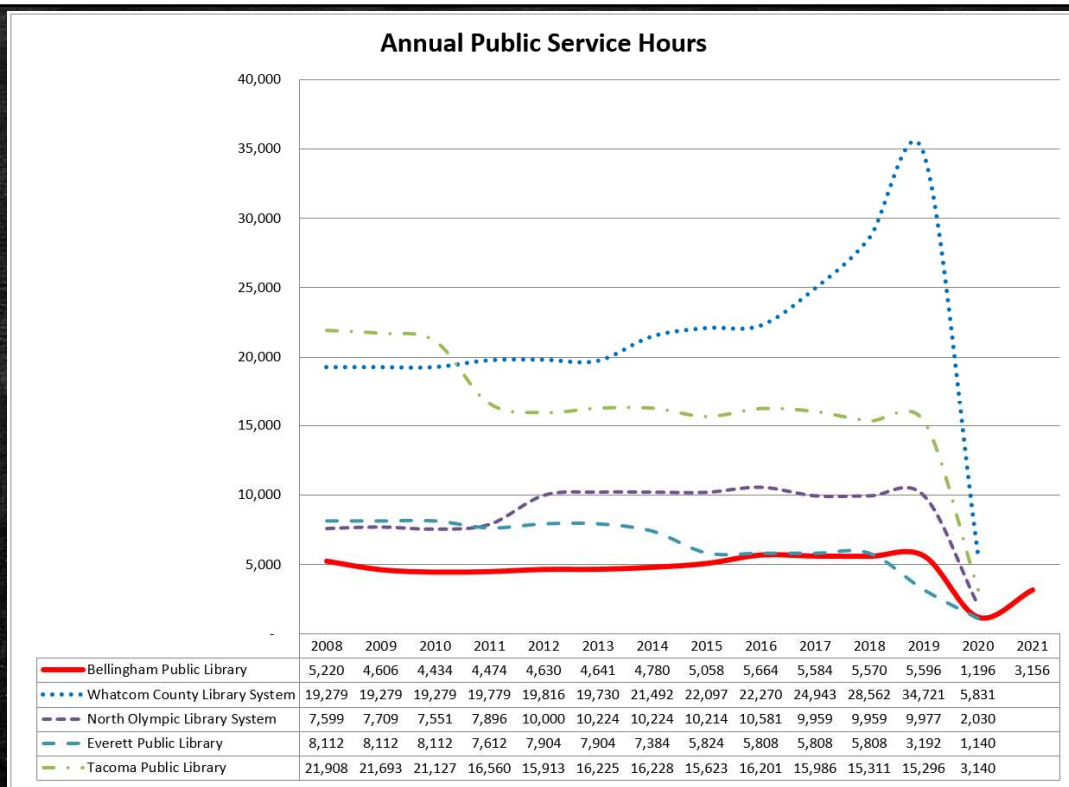
Nope. Similar story for attendance – we’re generally right around the State average, per capita, but dropped off less than others during the first year of the pandemic.
How about our expenditure on items for the collection, and digital subscriptions?

Per Capita Expenditure on Materials, adjusted for inflation

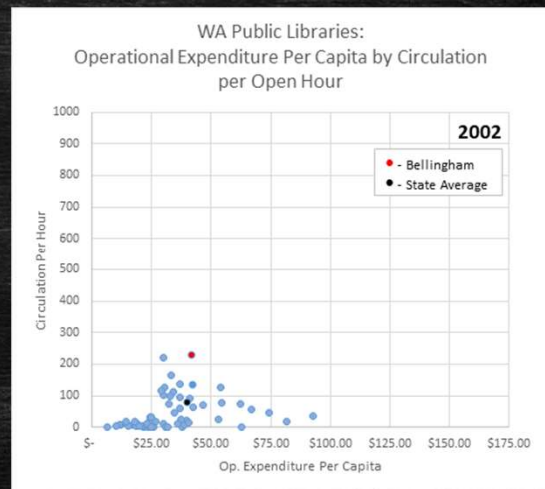
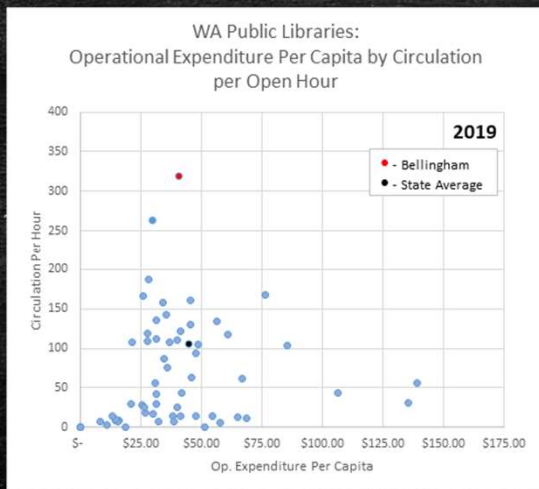
Note: In constant 2002 dollars. Indexed to CPI-U, US City Average, not seasonally adjusted, all items, 1982=100.



Ah. Well, that's definitely part of it. We've spent less on the Collection, per capita, than the State Average. We've been catching up, in the past few years, though, as the State average has declined while we've trended up. In 2020 we dropped a bit, but less than the State average did.



There has been a slight increase in the number of hours we're open to the public. This dropped dramatically in 2020 but should recover as soon as we're free of the pandemic.



This isn't in the comparison spreadsheet, but is an example of what can be done with the data that it has.

This time-series charts shows Operating Expense per Capita vs Circulation per Open Hour from 2002 to 2020. There's such a jump in Circulation per Hour in 2020 that it's hard to follow. It's likely that the major increase is largely supported by digital circulation, which isn't dependent on buildings being open.

What Else...?

400+ columns of data to play with!

<https://www.bellinghampubliclibrary.org/wplsr-merged>

